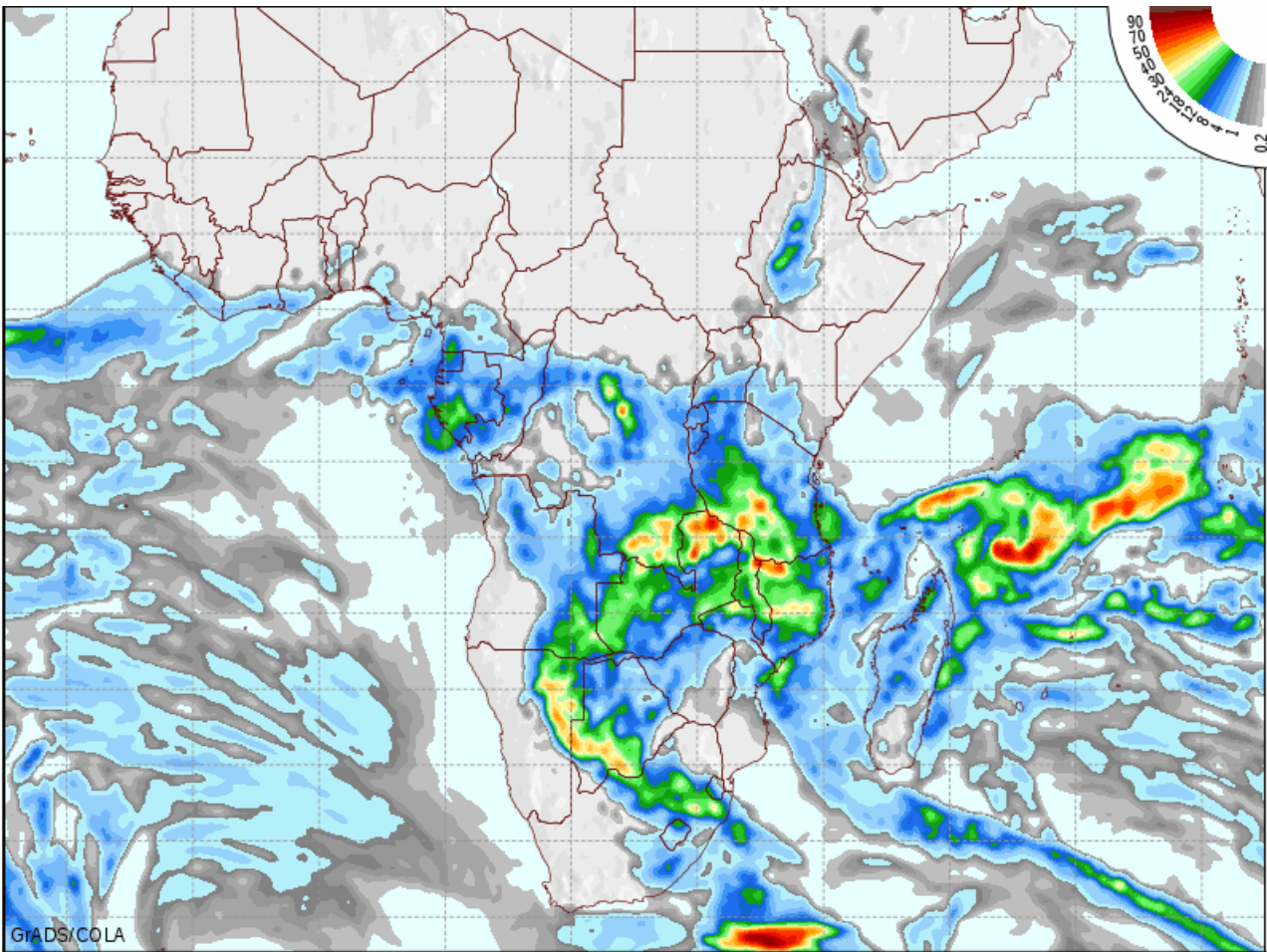
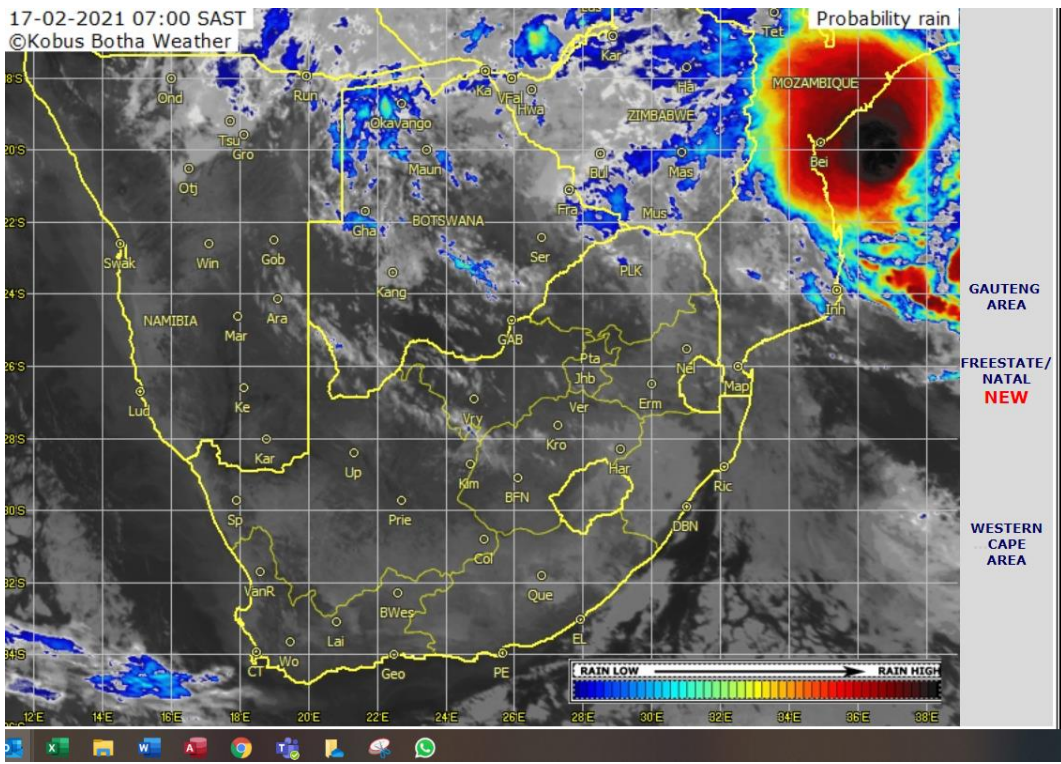


24Hr GFS Issued: 12Z21FEB2021 Valid: 12Z Mon 22 FEB 2021 24hr Precipitation (mm)



72Hr GFS Issued: 12Z21FEB2021 Valid: 12Z Wed 24 FEB 2021 24hr Precipitation (mm)



The report displays data from 00:00:00 am till 23:59:59 pm per day

Name	Province	Midnight till current	22 Feb Mon	21 Feb Sun	20 Feb Sat	3 Day Total	14 Day Total	30 Day Total	Season Total	Prev. Season %2	Prev. Season To Date %
<b>Free State</b>											
Bothaville	Free State	0.03	8.26	0.02	0.03	8.34	41.07	112.09	588.87	805.71 mm   73.09%	506.47 mm   116.27%
Bultfontein-Weltevrede	Free State	0.67	23.42	0.04	0.01	24.14	52.12	103.94	585.42	738.95 mm   79.22%	449.37 mm   130.28%
Danielsrus	Free State	1.64	3.26	0.00	0.02	4.92	18.92	77.59	774.43	654.54 mm   118.32%	517.14 mm   149.75%
Fouriesburg	Free State	1.29	7.56	0.00	0.00	8.85	9.73	64.72	759.27	637.97 mm   119.01%	418.98 mm   181.22%
Frankfort	Free State	0.01	9.94	0.02	0.00	9.97	25.35	103.77	646.51	536.67 mm   120.47%	381.55 mm   169.44%
Hoopstad-Noord	Free State	0.08	7.53	0.84	0.01	8.46	23.71	111.57	473.26	806.75 mm   58.66%	528.32 mm   89.58%
Hoopstad-Vryheid	Free State	0.13	22.39	0.30	0.46	23.28	34.13	55.61	409.47	643.05 mm   63.68%	457.61 mm   89.48%
Koppies-Sasol	Free State	0.51	9.39	0.01	0.01	9.92	12.40	38.24	375.11	667.65 mm	405.21 mm
<b>Limpopo</b>											
Marble-Hall	Limpopo	0	0.00	0.00	0.00	0	0.61	97.29	328.60	477.68 mm   68.79%	395.38 mm   83.11%
<b>Mpumalanga</b>											
Amersfoort	Mpumalanga	0	11.69	0.06	0.00	11.75	40.04	155.24	517.64	642.38 mm   80.58%	522.78 mm   99.02%
Argent	Mpumalanga	0	6.45	0.00	0.00	6.45	20.50	119.74	546.18	641.60 mm   85.13%	572.27 mm   95.44%
Davel	Mpumalanga	0	0.00	0.00	0.00	0	5.68	49.41	421.34	561.34 mm   75.06%	554.41 mm   76.00%
Devon	Mpumalanga	0	30.21	0.00	0.08	30.29	36.37	165.18	613.02	664.83 mm   92.21%	457.61 mm   133.96%
Driefontein	Mpumalanga	0	3.33	0.00	0.00	3.33	7.64	181.95	589.51	696.39 mm   84.65%	569.03 mm   103.60%
Grootvlei	Mpumalanga	0.01	16.86	0.00	0.00	16.87	29.00	111.49	580.21	658.35 mm   88.13%	477.17 mm   121.59%
Middelburg-Pan	Mpumalanga	0	0.00	0.00	0.00	0	10.28	162.39	612.63	767.19 mm   79.85%	561.52 mm   109.10%

Kroonstad	Free State	0.28	10.93	0.14	0.00	11.35	26.42	64.20	286.97	653.40 mm   43.92%	462.14 mm   62.10%
Senekal	Free State	5.77	6.38	0.01	0.01	12.17	13.43	122.68	620.22	604.82 mm   102.55%	422.26 mm   146.88%
Viljoenskroon	Free State	0	3.36	0.00	0.02	3.38	34.87	140.37	618.87	750.14 mm   82.50%	484.03 mm   127.86%
Vrede	Free State	0.01	3.04	0.00	0.00	3.05	30.89	105.38	780.88	680.96 mm   114.67%	482.61 mm   161.80%
Vrede-Mooihoek	Free State	0	2.59	0.00	0.01	2.6	48.86	119.75	708.08	540.06 mm   131.11%	385.02 mm   183.91%
Marquard	Free State	5.9	6.37	0.00	0.00	12.27	14.10	71.95	564.89	630.76 mm   89.56%	404.11 mm   139.79%
Vredefort	Free State	0.02	0.69	0.05	0.00	0.76	14.81	17.83	524.69	786.31 mm   66.73%	513.67 mm   102.15%
Warden	Free State	0	4.01	0.03	0.15	4.19	26.18	70.05	652.30	620.93 mm   105.05%	442.71 mm   147.34%
Wesselsbron	Free State	0.09	15.01	0.00	0.00	15.1	32.47	115.41	554.96	607.81 mm   91.30%	419.94 mm   132.15%
<b>✈ Gauteng</b>	<b>Gauteng</b>										
Pretoria-Oos	Gauteng	0	0.37	0.00	0.00	0.37	5.25	210.03	662.19	980.91 mm   67.51%	799.23 mm   82.85%
Morgenzon	Mpumalanga	0.02	2.21	0.00	0.00	2.23	36.94	189.41	669.61	790.01 mm   84.76%	601.92 mm   111.25%
Platkop	Mpumalanga	0	26.23	0.02	0.00	26.25	42.60	145.68	614.64	636.66 mm   96.54%	471.21 mm   130.44%
Standerton	Mpumalanga	0	21.29	0.00	0.03	21.32	28.03	131.05	490.59	768.29 mm   63.85%	579.62 mm   84.64%
Witbank	Mpumalanga	0	0.07	0.00	0.00	0.07	5.77	93.71	437.03	833.65 mm   52.42%	628.52 mm   69.53%
Delmas	Mpumalanga	0	38.66	0.00	0.00	38.66	40.61	127.70	369.82	883.47 mm   41.86%	679.48 mm   54.43%
<b>✈ North West</b>	<b>North West</b>										
Meliodora	North West	0.1	15.65	0.01	0.07	15.83	25.90	125.66	717.83	876.09 mm   81.94%	574.10 mm   125.04%
Mareetsane	North West	1.46	8.97	0.00	0.00	10.43	12.41	138.63	620.18	566.75 mm   109.43%	380.39 mm   163.04%
Schweizer-Reneke	North West	1.61	15.42	0.09	0.03	17.15	43.19	159.70	700.22	541.71 mm   129.26%	434.81 mm   161.04%
Rysmierbult	North West	0	2.55	2.36	0.00	4.91	42.74	93.59	511.91	717.40 mm   71.36%	467.64 mm   109.47%
Leeudoringstad	North West	3.07	45.06	13.69	0.07	61.89	64.18	132.37	565.93	978.93 mm   57.81%	739.54 mm   76.52%
Grootpan	North West	1.13	0.51	9.89	0.00	11.53	15.48	129.34	406.45	670.40 mm   60.63%	505.09 mm   80.47%